

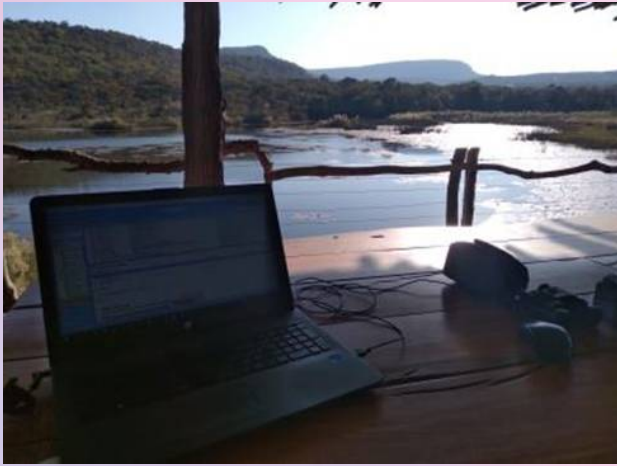
Residents at Boschhoek Mountain Estate in the Waterberg have again astounded with their pics this festive season!

Only an hour and a half from Pretoria and two hours from Johannesburg, Boschhoek is waiting for you. Enjoy!





Living the slow life, 1500 hectares of valleys and vistas, streams and plains, all yours when you are fortunate enough to call Boschhoek home.

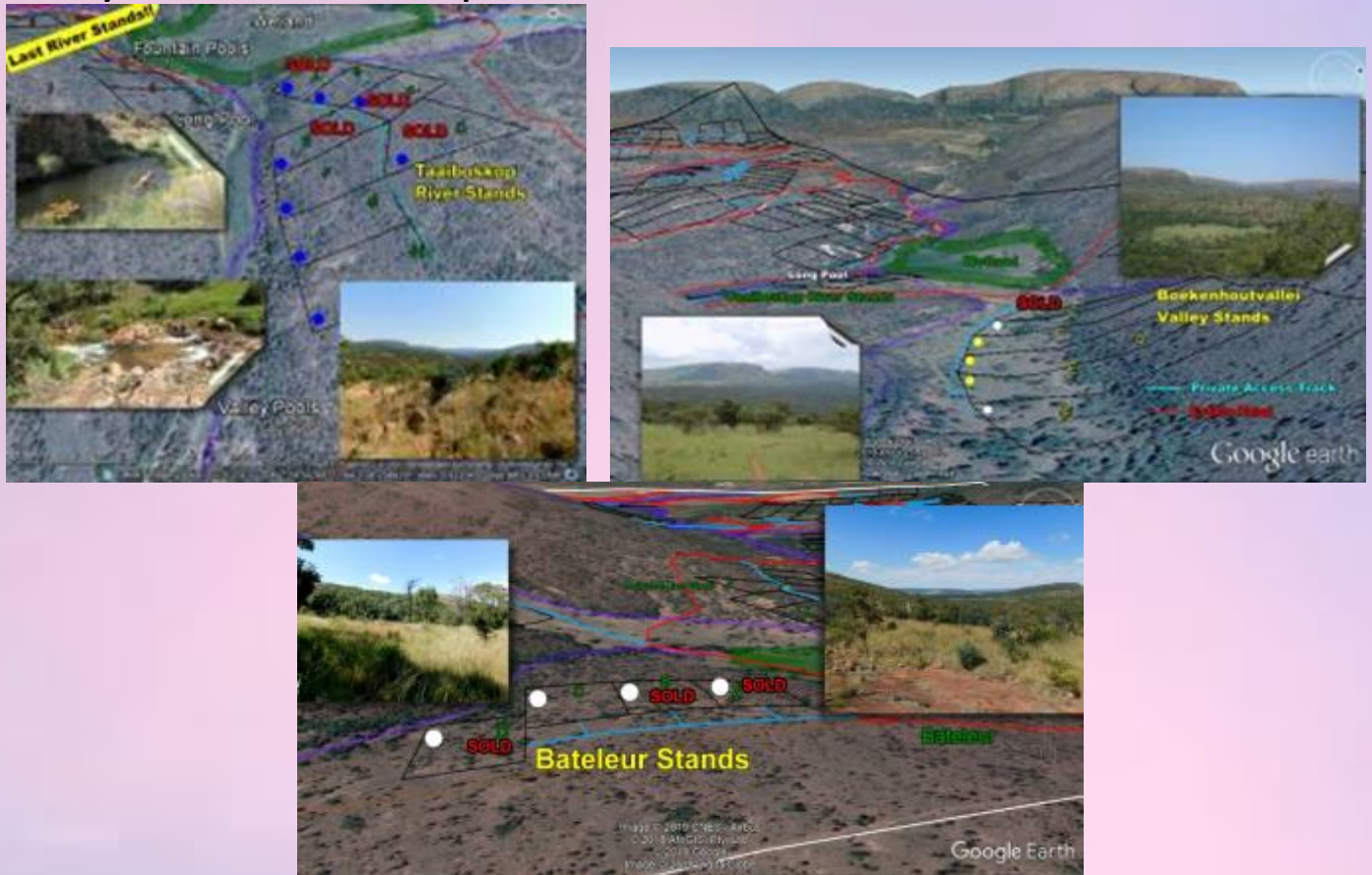


Excellent connectivity allows us to reach out from our sanctuary, whether for work or play. Off the grid with load shedding but a distant memory with levies of just over R1000 per month, Boschhoek has no equal. With a total building footprint of only around a quarter percent (0.25%), nature reigns supreme.





The last full title bush estate, more than 85% sold, now in its stunning [last phase](#) with only a couple of 1 – 2 hectare full title bush properties left from R999 000, Boschhoek is a stronghold of serenity in a world evermore upside down.



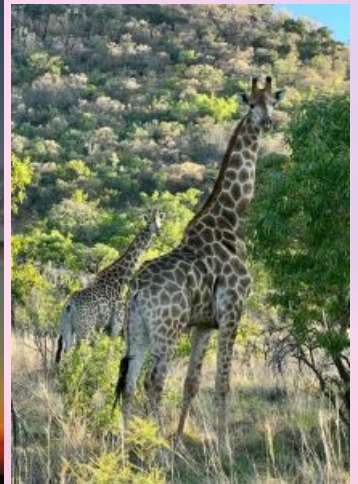
With no minimum size for your bush home, Boschhoek lets you live your own bush dream, whether a soul searching retreat or a magnificent mountain lodge. Whether for a weekend breakaway or a new life altogether, Boschhoek is your place of peace.



Those who prefer to share with like-minded others could also consider one of the last shares in our [Berg&Bosch shared lodge](#) at R350 000.



See [here](#) for an exquisite two minute flyover and [here](#) for an article in SA's premier *Estate Living* magazine.



As the sun rises on yet another year on Boschhoek, we would like to invite you to come and share in its secrets. A lovely day outing from the city, we will take you exploring for a couple of hours over weekends or as it suits. Kindly call to arrange. Combine it with your own streamside picnic, or enjoy a lovely light meal at [Leeuwenhof Country Lodge and Garden Spa](#) next door.



All credit to the fellow Boschhoekers for their astounding pictures!

The Boschhoek Team

www.boschhoekmountain.co.za

Herbert Smith (083)654-8201



85% Sold – +/- 60 bush homes built

Full title 1-2 Ha last phase stands now available from R999 000

Share a furnished lodge @ R350 000, R175 000 Joint Purchase

Waterberg (Modimolle/Nylstroom) 1.5 hrs from Pretoria, 2 hours from Johannesburg

Approximately 1500 hectares unspoilt bush, 0.25% (a quarter percent) human footprint

Levies R1315 per month, basic water provision free

Off the grid – no electricity accounts and no load shedding

Excellent connectivity allows us to reach out to the world.

No minimum size for your bush home, whether a rustic weekend getaway or a magnificent mountain lodge



For a hauntingly beautiful two minute flyover, see <https://youtu.be/cvpAIbnOH84>

For previous newsletters, see <http://www.boschhoekmountain.co.za/Newsletter.html>